

WHEN SECONDS  
COMES FIRST...



**CRITICAL CARE  
SOLUTIONS**

# About Trivitron Healthcare

By combining innovation with affordability and accessibility, Trivitron is a leading healthcare technology & medical devices enterprise that has been operating for more than two decades to improve health and medical care throughout the world. At Trivitron, quality healthcare is considered as a fundamental right of people and pledge to make top-notch, cutting edge healthcare technology available for people of all classes.

Trivitron lay great emphasis on research and development. Our team includes internationally acclaimed experts and leading scientists who innovate unprecedented health technologies suitable for healthcare needs of today and tomorrow.

Trivitron provide technological advancements to hospitals, individual healthcare providers, independent clinics, extended care facilities and laboratories, catering to healthcare needs in multiple verticals like -

 **Medical Imaging Solutions**

 **In-Vitro Diagnostics (IVD)**

 **Critical Care & ICU Solutions**

 **Radiation Protection Products**

 **Newborn Screening (NBS)**

 **Renal Care Solutions**

Through a growing network of 1,500+ employees, 1,200+ channel partners and 15 world-class manufacturing units in India, USA, Finland, Turkey & China, Trivitron Healthcare is reaffirming its commitment to offer superior health technologies in 180+ countries saving lives and improving care and have been serving 100,000+ healthcare institutions across the world.

By simplifying and expanding our business, Trivitron is rapidly moving and establishing itself as a global leader in medical technology. Trivitron is committed to build a sustainable business that delivers value by offering best available health technology solutions for millions of people worldwide.

# Global Manufacturing Facilities



# Global Reach

Triviron Healthcare as a medical technology company providing affordable healthcare solutions weaves a fascinating thread of inspiration to many healthcare providers. Triviron markets its products to hospitals, individual healthcare providers, independent clinics and laboratories, extended care facilities and all other roofs providing healthcare solutions. At Triviron, quality healthcare is considered as a fundamental right and the vision is to make it available for all across the globe.



**100,000+**  
**Installations**



**Over 1,500**  
**Employees**



**15 Manufacturing**  
**Facilities**



**1,200 Channel**  
**Partners**



**Client Across**  
**180+ Countries**



Flagship Configuration



# “ Speaking Your Language of Care

## Contents

<b>01. Ventilator</b>	<b>08 - 13</b>
<b>02. HFNC</b>	<b>14 - 15</b>
<b>03. Point-of-Care Ultrasound</b>	<b>16 - 19</b>
<b>04. Patient Monitor</b>	<b>20 - 27</b>
<b>05. Central Nursing Systems</b>	<b>28 - 29</b>
<b>06. Infusion &amp; Syringe Pump</b>	<b>30 - 33</b>
<b>07. Electrocardiogram (ECG)</b>	<b>34 - 35</b>
<b>08. Defibrillator</b>	<b>36 - 37</b>
<b>09. Foetal Monitor</b>	<b>38 - 39</b>
<b>10. Cardiac Assessment System</b>	<b>40 - 41</b>
<b>11. Suction Machine</b>	<b>42 - 43</b>
<b>12. Anesthesia Workstation</b>	<b>44 - 45</b>
<b>13. Virtual Dissection Table</b>	<b>46 - 47</b>
<b>14. Critical Care Consumables</b>	<b>48 - 49</b>
<b>15. Renal Care</b>	<b>50 - 51</b>

---

# VENTILATOR

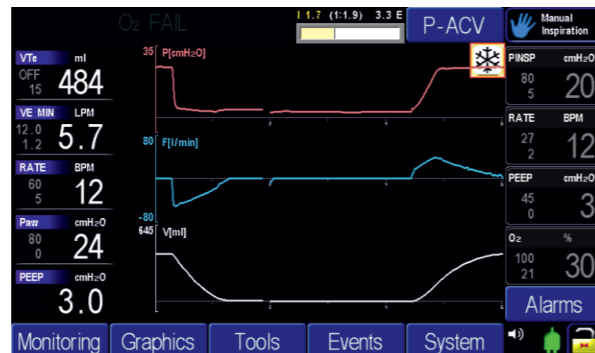
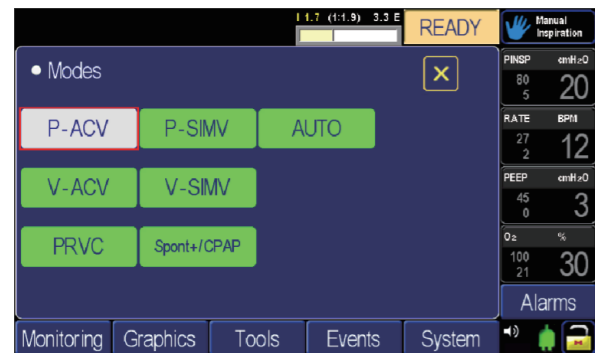


# MTV 1000

## Multi-Purpose ICU Ventilator

MTV 1000 offers innovative and unique technology with high performance, affordable and reliable solution complying to International Quality Standards

- Multi Purpose Ventilator (Ambulance, ER, ICU)
- 7" color TFT, Touch Screen & Knob
- Built in Ultra Quite Turbine Technology
- 3 Hours Battery Backup as Standard Feature
- High pressure Oxygen and Low Flow Oxygen
- NIV/ Mask ON/OFF in All Modes
- Proximal Pressure Monitoring
- High Flow Oxygen Therapy (O2 Stream)
- Modes: PACV, PSIMV, VACV, VSIMV, SPOINT+PS/CPAP, Auto, PRVC, Smart Apnea Backup
- Optional\*: SpO2/ ETCO2, Nebulizer with Additional Battery: Over 6 hours Backup



# MV 2000

## High Performance ICU Ventilator

MV 2000 supports clinicians to provide a one-step higher treatment service through the specialization and technical innovation of ventilation technologies and also makes its best efforts to develop the technologies to help patients maintain comfortable and stable breathing

- High-performance ventilator for Adults to Neonatal use
- 15" touch screen and intuitive and user-friendly UI
- Maximizing care efficiency by adopting the leak compensation with trigger-synchronize function
- Caring patients with weak lung mechanic and children by offering the high frequency mode
- Providing doctors with convenience and reducing infection possibility in suction by adopting the closed suction function
- Remote monitoring through central monitoring system & Convenient product maintenance through smart viewer



“  
Delivering Quality Care

# Inspiration 7i

## Universal Flagship Ventilator

- Applications: Neonate through adult (2ml Tidal Volume)
- NIV in all Modes
- Auto Control for easy Weaning
- 3 Waveform and 3 Loops
- Recruitment Maneuver, Tube Compensation, SBT and Suction Support
- Smart Nebulizer with User selectable duration and interval
- High performance PSOL and active exhalation
- 72 Hours Graphical and Tabular Trend for 31 Parameters
- Capnography ready
- Outstanding Heliox Management
- Optional: Remote Viewing System with CLININET™ HL7 GATEWAY™



# eVolution 3e

## Flagship Configuration Ventilator

- 2ml Tidal Volume
- Applications: Adult through Neonate
- Easy to use with 12.1" Large Display touch Screen use interface
- NIV in all Modes
- Auto Control for easy Weaning
- Smart Nebulizer with User selectable duration and Interval
- High Performance PSOL and active exhalation
- 72 Hours Graphical and Tabular Trend for 31 Parameters
- Optional: Volumetric Capnography Monitoring
- Optional: Remote Viewing System with CLININET™ HL7 GATEWAY™



“  
Chosen For Excellence

HFNC

## ECVENT HFO

High Flow Oxygen Therapy

- ▶ Advanced humidity control with minimum condensation
- ▶ Proprietary anti-cross infection design without extra work on disinfection
- ▶ High flow (2-80 LPM)
- ▶ Accurate flow control (<0.5 LPM)
- ▶ Intuitive User Interface with Color LCD Touch Screen
- ▶ Full range patient interface ( Nasal Cannula, Nasal Mask, Full Face Mask Tracheostomy Inteface)





---

# POINT-OF-CARE ULTRASOUND



# Wisonic Navi

A Premium Point-Of-Care Ultrasound

With the cutting-edge technology for precise navigation improving quality of care and patient safety during critical care procedures, Navi is designed to be indispensable focusing on every detail as previously difficult tasks become routine with sight

- 19-inch full touch screen with liquid disinfection support
- Best in industry, 7hrs battery backup
- Remote control probes
- Motorized height adjustment
- WiNeedle - Intelligent Needle Enhancement
- WiLearn - Education Center

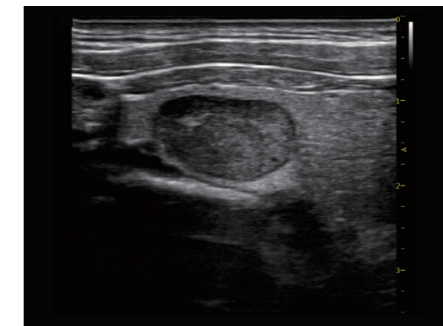
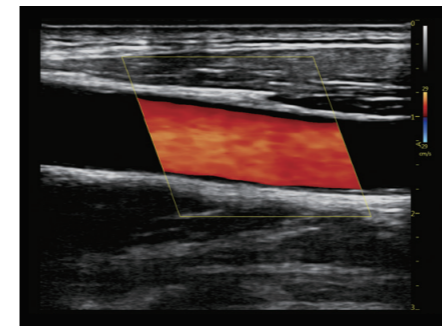
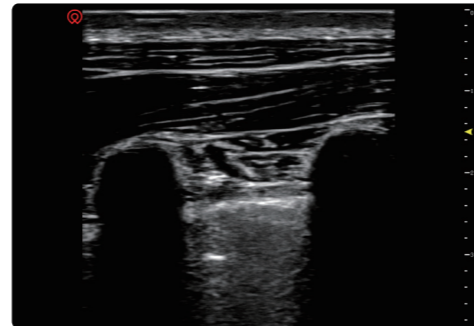
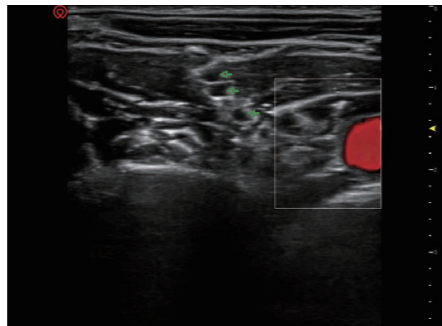
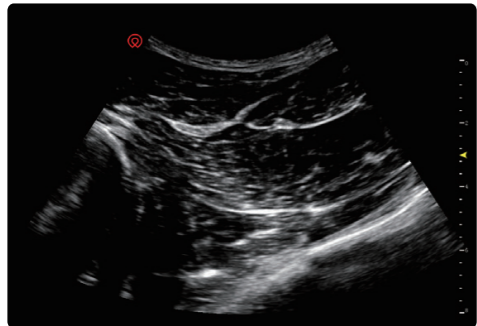


# SonoRad K40

Ultra-Light | Ultra-Thin | Ultra-Precise

SonoRad K40, the innovative portable color ultrasound system brings to you the advanced technology of our original RF ultrasonic metadata platform, a light, intelligent, and powerful tool.

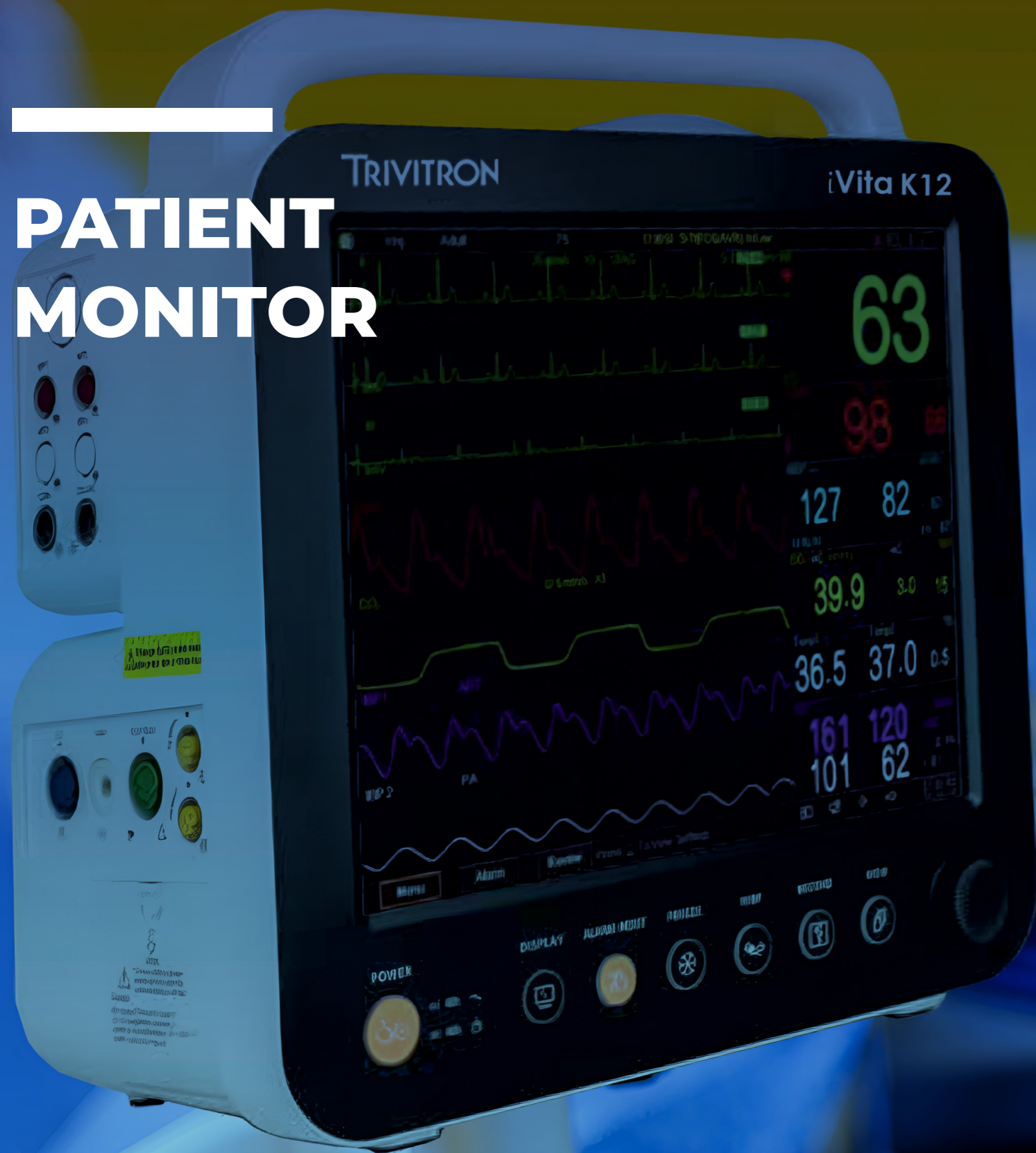
- 16-inch high resolution flat panel display
- Full integrated probe to reduce overall space
- Integrated touchable alphabetic keyboard
- Integrated capacity touch panel to easy and simplify workflow



“

Bringing The Future  
Of Healthcare

# PATIENT MONITOR



## iVita K10

### Patient Monitoring System with 10.4" Touchscreen Display

- Standard configuration: ECG, NIBP, RESP, PR, Spo2, TEMP
- 10.4" high resolution display Touch screen
- User customized NIBP measuring cycles up to 5-phase
- 9 traces on-screen waveforms and maximal up to 13
- HI7 protocol, Bed to bed view and available



## iVita K12

### Patient Monitoring System with 12.1" Touchscreen Display

- Standard configuration: ECG, NIBP, RESP, PR, Spo2, TEMP
- 12.1" high resolution display Touch screen
- 9 traces on-screen waveforms and maximal up to 13
- HI7 protocol and Bed to bed view
- User customized NIBP measuring cycles up to 5-phase
- Upgrades : Dual IBP, ETCO2 (Sidestream / main stream), Nellcor SpO2, SunTech NIBP, Cerebral State Monitoring, CMS



## iVita K15

### Patient Monitoring System with 15" Touchscreen Display

- Standard configuration: ECG, NIBP, RESP, PR, Spo2, TEMP
- 15" high resolution display Touch screen optional
- 9 traces on-screen waveforms and maximal up to 13
- HI7 protocol and Bed to bed view
- User customized NIBP measuring cycles up to 5-phase
- Upgrades : Dual IBP, ETCO2 (Sidestream / Mainstream), Nellcor SpO2, SunTech NIBP, Cerebral State Monitoring, CMS



## iVita K12-M

### Patient Monitoring System with 12.1" Display

- Standard configuration: ECG, NIBP, RESP, PR, Spo2, TEMP
- 12.1" High Resolution display
- Plug and play Modular design for on site upgrade
- Adult/Pediatric/Neonate measurement modes
- 2000 hrs of trends
- Upgrades : Dual IBP, ETCO2 (Sidestream / Mainstream), Cerebral State Monitoring, CMS



“  
Engineering The Flow Of  
Healthcare

## iVita 12H

### Patient Monitoring System with 12" Display

- Standard configuration: ECG, NIBP, RESP, PR, Spo2, TEMP
- Clear 12.1" TFT screen with backlit
- Ambulatory blood pressure technology, anti-movement
- 15 kinds of drug dose calculation
- 3 level Audible and visual alarming



## iVita 10H

### Patient Monitoring System with 10" Display

- Standard configuration: ECG, NIBP, RESP, PR, Spo2, TEMP
- Clear 10.4" TFT screen with backlit buttons
- Ambulatory blood pressure technology, anti-movement
- 15 kinds of drug dose calculation
- Various languages operating systems
- 3 level Audible and visual alarming



## iVita 17H

### Patient Monitoring System with 17" Display

- Standard configuration: ECG, NIBP, RESP, PR, Spo2, TEMP
- 17" TFT LCD Screen
- Plug and play Modular design for on site upgrade
- 15 drug concentration analysis
- 96 hours graphic and tabular trends of all parameter
- USB data storage and review



## iVita 15H

### Patient Monitoring System with 15" Display

- Standard configuration: ECG, NIBP, RESP, PR, Spo2, TEMP
- 15" TFT LCD Screen
- Plug and play Modular design for on site upgrade
- 15 drug concentration analysis
- 96 hours graphic and tabular trends of all parameter
- USB data storage and review



“

Transforming The Way You  
Receive Healthcare

# iVita O2 Plus

## Vital Sign Monitor

- Available in two variants-SpO2 and SpO2+NIBP
- 4.3" high resolution color TFT LCD display, Compact & portable in design
- Continuous real-time display SpO2, PR SpO2 plethysmogram, bar graph, SpO2 and PR trend graph
- Adopting digital SpO2 technology which has strong anti-interference capability
- Standard adult finger-clip probe, binding probe for neonatal patients is optional
- Applicable to adult, paediatric and neonatal patients



# iVita O2 ft

## Fingertip Pulse Oximeter

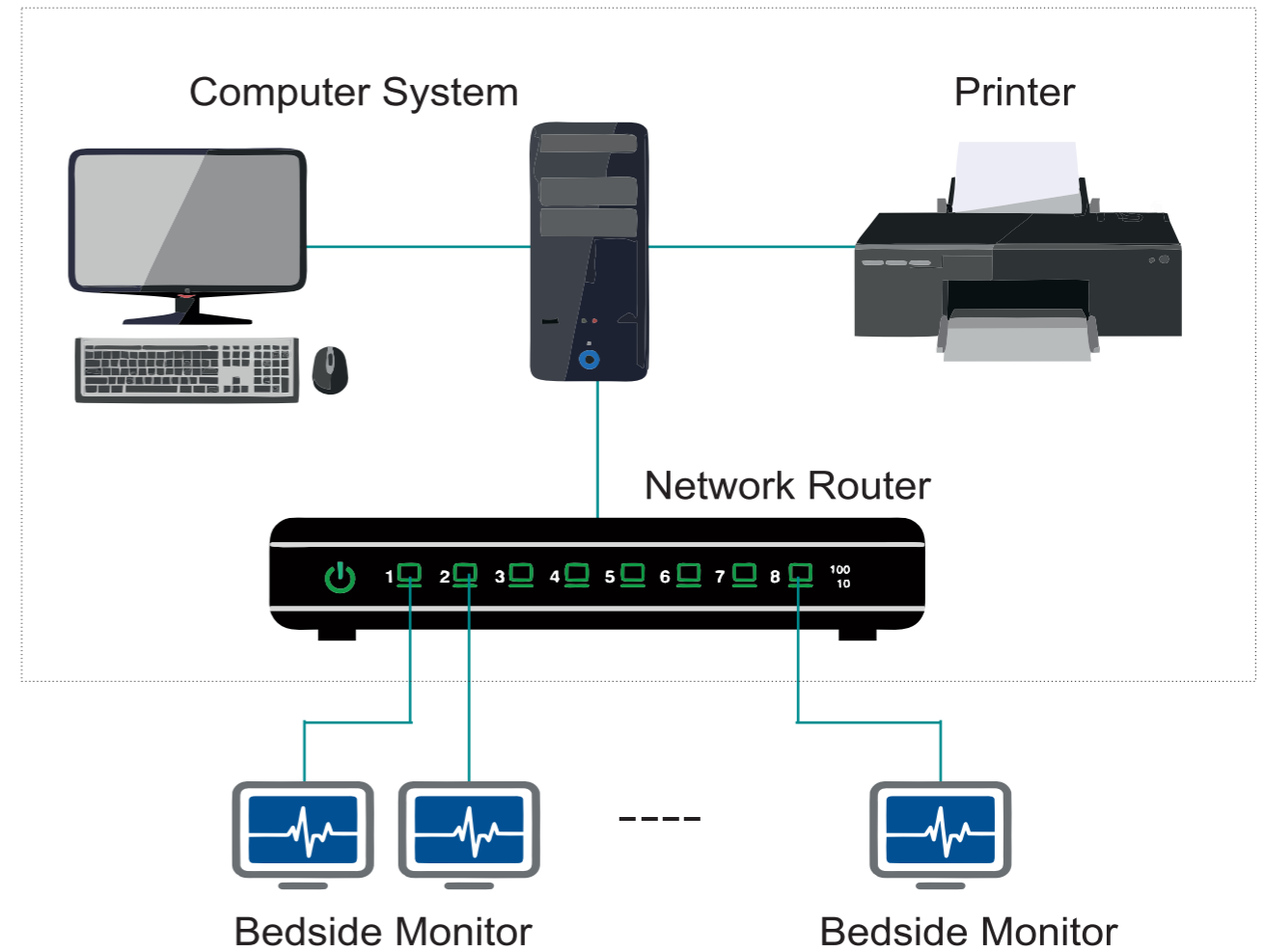
- Universal display with convenient detection
- Measures blood oxygen saturation and pulse rate
- Anti-motion technology
- Reduced power consumption



“

**Dedicated To Hope,  
Healing And Recovery**

# CENTRAL NURSING SYSTEM (CNS)



- Support any size of screen, single screen for monitoring 32 beds and dual screen for monitoring 64 beds, maximum 128 beds
- Powerful anti-interference network signal
- Pure central operating system, no software interference
- Humanized operating interface, simple and clear
- Comprehensive View of Patient Information

---

# INFUSION & SYRINGE PUMP



# Intrafuse<sup>+</sup>

## High Precision Volumetric Infusion Pump

- Applicable for adult, Paediatrics and NICU (Neonatal)
- Anti-free-flow function to make infusion safer
- Real-time display of infused volume / bolus rate / bolus volume / KVO rate
- Change flow rate without stopping the pump



# Intrafuse Grand

## High Precision Touchscreen Volumetric Pump

- 4.3 inch color touch screen
- Electric door & electric anti-free flow clip
- History record more than 5000 logs
- 9 hours battery back-up time
- Ip24 waterproof



# Flogard<sup>+</sup>

## High Precision Syringe Pump

- 10, 20, 30, 50/60 ml Syringe Applications
- Drug library with the most used drugs
- History record review and last configuration memory
- Anti-bolus system
- Micro flow rate of 0.1 ml/h and Body weight mode to satisfy the requirement for Neonatal/ Paediatric



# Flogard Grand

## High Precision Color Touchscreen Syringe Pump

- 2/3, 5, 10, 20, 30, 50/60 ml syringe application
- Drug library with most used drugs
- 4.3 inch color touch screen
- History record more than 5000 logs
- 12 hours battery backup time
- Ip24 waterproof



# Stackable Workstation

- Free style stackable 2, 4, 6, 8 channel modular design
- Intelligent Infusion Relay Mode
- Information & alarm management
- Integrate with hospital HIS system



# Electrocardiogram (ECG)

## iBeat 3V Pro

### 3 Channel ECG

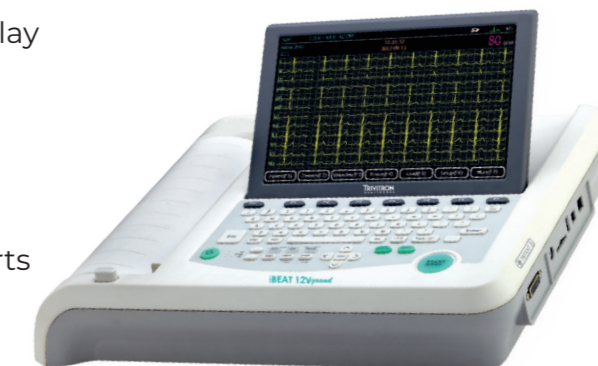
- Simultaneous 12 leads ECG acquisition and display
- 7 inch 800x480 TFT color LCD
- Alpha-numeric keyboard
- Built-in 4G SD card, save up to 10,000 ECG reports in XML/PDF/BMP format (optional)
- Pacemaker detection
- Precise ECG auto-interpretation program
- USB Slave port can be connected to PC-ECG software (optional)



## iBeat 12V Grand

### 12 Channel ECG

- Simultaneous 12 leads ECG acquisition and display
- Printing on 210mm/213mm thermal paper (Roll or Z-fold)
- 10 inch 800x480 TFT color LCD
- Built-in 4G SD card, save up to 10,000 ECG reports in XML/PDF/BMP format (optional)
- Pacemaker detection
- Precise ECG auto-interpretation program
- USB Slave port can be connected to PC-ECG software (optional)



# DEFIBRILLATOR

## iJiva Pro

### Biphasic Defibrillator

- Energy Level Selection Range - 2, 3, 5, 10, 20, 30, 50, 70, 100, 150, 200 joules
- Built-in Printer
- Charging Time 6 secs
- Battery Capacity 70-100 Shocks on Single Charge
- Adult & Paediatric Paddles Support
- Compact & Light Weight
- Printing on 2" Thermal Paper
- Optional Upgrades: SPO2, NIBP, Internal paddles, etc.



## iJiva AED

### Automated External Defibrillator

- Three step defibrillation process
- Two button operation
- Extensive voice and visual prompt for the operator
- Biphasic energy output
- Lock-out protection to prevent inadvertent defibrillation
- PC-based event review (Optional)



# FOETAL MONITOR

## ibaby 12x

### Foetal Monitor with 12" Display

- High Resolution, 12" TFT color screen that folds upto 90 degrees
- Extensive Data Storage Memory with Playback and print
- DSP Technology & Real-time identifying and measurement for FHR that provide accurate and reliable results
- Automatic Foetal Movement Detection and Accounting



## ibaby 10x

### Foetal Monitor with 10" Display

- 10.2 inch LED color display
- Flexible, Light weight, easy operation
- 0 to 90 degree foldable screen
- Simultaneous maternal and fetal parameters display
- Data storage, Review and Print option
- Parameter: FHR, TOCO, FM, Thermal Printer
- Options: Twins probe, ECG, SPO2, NIBP, Resp, Temp



## ibaby 7x

### Foetal Monitor with 7" Display

- High Resolution, 7" TFT color screen that folds upto 90 degrees
- Special High Sensitive Probe
- Extensive Data Storage Memory with Playback and print
- DSP Technology & Real-time identifying and measurement for FHR that provide accurate and reliable results
- Automatic Foetal Movement Detection and Accounting
- CTG Scoring system: Krebs score/Fischer Score



# CARDIAC ASSESSMENT SYSTEM

## iSTS

### Computerized Stress Test System

- Data reviewed beat to beat with full disclosure for each case
- No Constraint on the number of cases stored for review
- Manual Selection of Enlarged median
- ST - Win enables automatic computation of all ST parameters
- Preview before printing.
- Medians refresh: manually adjustable 1 to 8 seconds at 1 second interval
- Supports arrhythmia detection



## iECG 24x

### Holter Monitoring

- Stores ECG data of all channels of all beats in selected template
- Facility to edit arrhythmia type of individual beat
- View trends of HR, detected arrhythmias, ST level of all channels
- 10, 20, 30 and 60 minutes disclosure
- Selection of normal beat automatically or manually
- Longest SV Tach, longest ST episode, maximum delta ST



# SUCTION MACHINE

## iVac 60

### High Performance Portable Suction Unit

- Capacity: -730mmHg±10 at 55~60LPM
- Overflow protection: Mechanical Type
- Tubing: Non-Collapsible Suction Tubing
- Vacuum Gauge: 2.0 inch, 0-760mm Hg
- Filter: Bacterial Filter Autoclavable / Reusable
- Pump type: Oil Free Twin Headed Piston Pump



## iVac 40

### High Performance Portable Suction Unit

- Capacity: -730mmHg+10 at 32~35LPM
- Overflow protection: Mechanical Type
- Tubing: Non-Collapsible Suction Tubing
- Vacuum Gauge: 3.0 inch, 0-760mm Hg
- Filter: Bacterial Filter Autoclavable / Reusable
- Pump type: Oil Free Twin Headed Piston Pump



# ANAESTHESIA WORKSTATION

## V Vent 2000

### High Performance Anaesthesia Workstation

- Modes: VCV, SIMV, Manual
- Adult and Pediatric application
- 10.1 inch screen
- Real-time detection for loops, Paw, BPM, VT and compliance
- Comprehensive monitoring capabilities include ventilation parameters monitoring, preset parameters, alarm indication and breathing waveform monitoring



## V Vent 3000

### High Precision Anaesthesia Workstation

- Modes: VCV, A/C, PCV, SIMV, Manual
- Adult and Pediatric application
- Tidal volume starting from 20ml upto 1500ml
- Adjustable PEEP 3-30cm H<sub>2</sub>O, Off
- 10.1 inch screen with no dead space
- Real-time detection for loops, paw, BPM, VT and compliance
- Comprehensive monitoring capabilities include ventilation parameters monitoring, preset parameters, alarm indication and breathing waveform monitoring



# VIRTUAL DISSECTION TABLE

## Anatomage

### Visualize Life with 3D Technology

ANATOMAGE TABLE hailed as the world's first and only life-size virtual dissection table, the Anatomage Table opens indefinite possibilities for both education and healthcare industries, whether it's for medical research, training, or education. Containing real human cadavers, along with the physiology functionality, the Anatomage Table allows users to interact with not only medically accurate anatomy but also interactive physiology elements.:

- Four photo realistic cadavers
- Human anatomy/ accurate gross anatomy
- Physiology simulation and pathway visualization
- Case Library with 1300+ 3D-rendered CT, MRI, and X-Ray Images
- Classroom, course, and lab integration
- The ability to upload new MRI and CT scans or use the built-in case library
- Quiz modes for self-assessment, or for course assessment (quizzes may be password protected)
- Radiological imaging workstation
- Animal case models
- Digital Pregnancy
- Living Bodies
- High-Resolution of Regional Anatomy
- Improved Rendering Visualization
- Optometry Applications





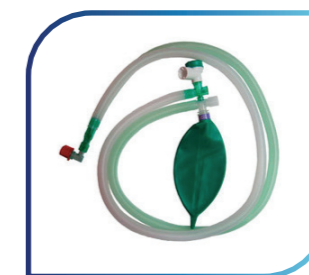
# CRITICAL CARE CONSUMABLES



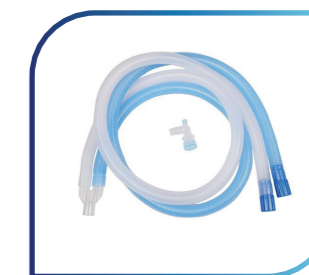
Ambu Bag



HME Filter



Bain Filter



Breathing Circuit



Monitor  
Accessories



Cpap Nasal  
Mask



Flow Sensor



Full Face Mask



Test Lung



IBP Kit



ESU Pencil

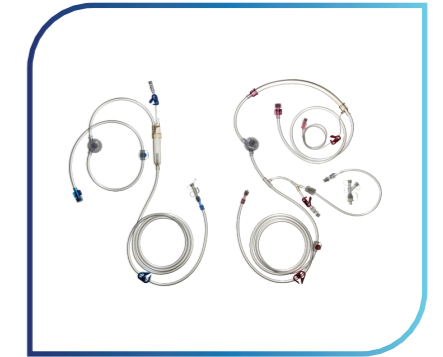
# RENAL CARE



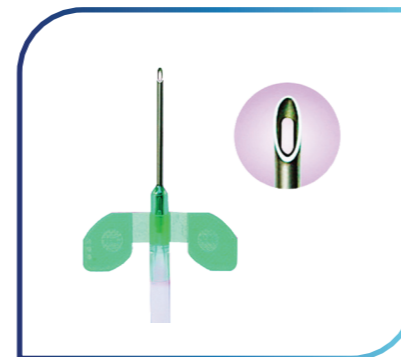
**DBB-27**  
Hemodialysis System



**TRIO-SURE**  
Dialysis Series



**MAXI-SUREFLOW**  
AV Blood Tubing Set



**BE-SURE**  
AV Fistula Needle Set



**TRIO-CATH**  
Catheter Series



**TRIO-DIALYSIS CHAIR**  
Hemodialysis Chair



**TRIO-OSMOSIS**  
RO Plant

**TRIVITRON**  
**H E A L T H C A R E**

---

*speaking your language*

**[www.trivitron.com](http://www.trivitron.com)**  
**[corporate@trivitron.com](mailto:corporate@trivitron.com)**

